

FITC-equivalent Biotinylated Human Claudin 18.2 Protein-VLP



Cat. No. CLD-HM182FB

Description

Source	Recombinant Biotinylated Human Claudin 18.2 Protein-VLP V2 is expressed from HEK293.
	It contains Met1-Val261 (It may have cross reaction with anti-His antibody).
Accession	P56856-2
Molecular Weight	The target protein has a predicted MW of 29 kDa.
Wavelength	Excitation Wavelength: 490 nm
	Emission Wavelength: 520 nm
Endotoxin	Less than 1 EU per µg by the LAL method.

Formulation and Storage

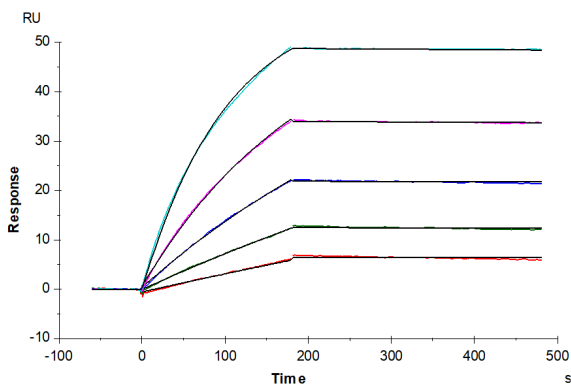
Formulation	Supplied as 0.22 µm filtered solution in PBS, 150mM L-Arginine (pH 7.4).
Storage	Valid for 12 months from date of receipt when stored at -80°C. Recommend to aliquot the protein into smaller quantities for optimal storage. Please minimize freeze-thaw cycles.

Background

Claudin18 (CLDN18) belongs to the large claudin family of proteins, which form tight junction strands in epithelial cells. CLDN18 is specifically expressed in the stomach and lung. CLDN18 has two alternatively spliced variants, CLDN18.1 and CLDN18.2. Isoform 2 (Claudin 18.2) is abundant in gastric tumors.

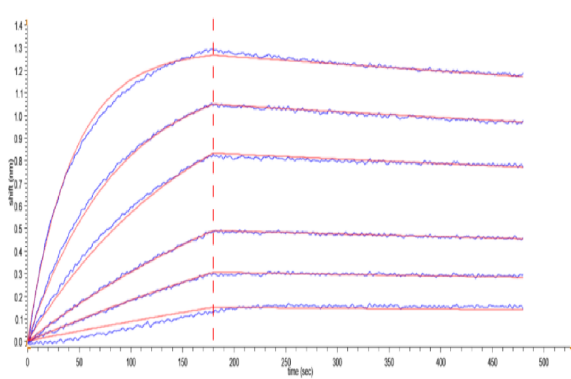
Assay Data

SPR Data



FITC-equivalent Biotinylated Human Claudin 18.2 VLP captured on CM5 Chip via Steptavidin can bind Anti-Claudin18.2 Antibody with an affinity constant of 16.38 pM as determined in SPR assay (Biacore T200) (QC Test).

BLI Data



Loaded FITC-equivalent Biotinylated Human Claudin 18.2 VLP on SA-Biosensor, can bind Anti-Claudin18.2 Antibody with an affinity constant of 0.15 nM as determined in BLI assay (Gator Prime).